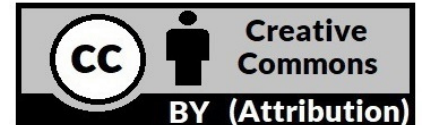


Terms of Use

This free, printable PDF sewing pattern was designed by Chelly Wood and is available to the public (along with its corresponding tutorial video or videos) at:



It has been marked with:



By downloading this free pattern, you agree to follow the Creative Commons Attribution copyright.

- 1 What does Creative Commons Attribution mean?



You may copy and redistribute the material in any medium or format. You may remix, transform, and build upon the material for any purpose, even commercially. However you must give appropriate credit, provide a link to the license, and indicate if changes were made. You may do so in any reasonable manner, but not in any way that suggests the licensor endorses you or your use. You may not apply legal terms or technological measures that legally restrict others from doing anything the license permits.

- 2 Why are there flowers on the pattern? What do they mean?



To learn more about the difficulty scale I use for my patterns (i.e. the little flowers), please go to ChellyWood.com, and in the menu, click on "Helpful Information." Then, in the drop-down menu, please click on "Tips and FAQ's." The system is explained there.



- 3 How do I find the tutorial that goes with my pattern?



On ChellyWood.com, right at the top of the home page, there's a button called "Website Navigation Guide." This guide will help you find the doll you want to sew for, along with this pattern and its tutorial video. It will also show you how to discover a list of all the dolls that will fit into this garment or accessory when completed.

- 4 I need help printing my pattern. What should I do?



Please visit your public library. Modern librarians are trained to help people with exactly this type of technology-related issue. (Chelly Wood is a retired librarian! She *KNOWS!*) You may be charged a small fee for the printed paper, but the librarian's assistance is free.

- 5 This pattern isn't exactly what I was looking for. Do you take requests?



Yes, I keep an ongoing list of requests. Leave your request in the comments on ChellyWood.com's blog. Be advised: it can take months or even years to design your request. An easier way is to create the pattern yourself through one of my online courses, which are found at:

<https://ctpub.com/pages/author-bio/chelly-wood>

NOTE: This pattern is designed to be printed on American 8.5 x 11 inch printer paper. For the A4 version, please go to ChellyWood.com

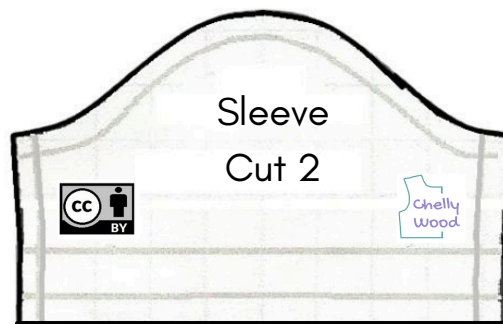
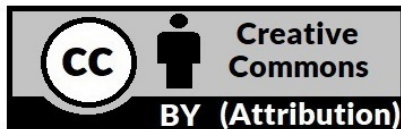
Free Sewing Pattern for Doll's Short-Sleeved Shirt with Bias Tape Collar

Please visit my YouTube channel, ChellyWood1 for the tutorial video that accompanies this pattern. Your video views help pay for my website and all its free patterns, so please watch! Comment! Like! and Share!



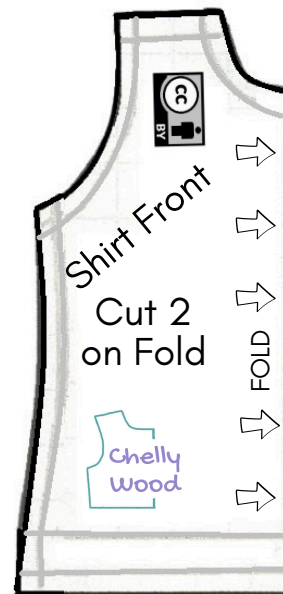
NOTE: This pattern is designed to be printed on 8.5 x 11 inch (standard American) paper or 216 x 279 mm paper **without margins**.

Use a scant 1/4 inch (4 mm) seam.



Are you looking for a pattern with a slightly different design? My Creative Spark class in doll clothes pattern designs may be just what you need... Search for Chelly Wood on the instructors' page at this website:
CreativeSpark.CTpub.com

ChellyWood.com




Difficulty Level:
Somewhat Advanced


Jeans and Dress Shirt Patterns for Male Fashion Dolls


JEANS

Cut 4 of Lightweight Denim



This jeans pattern will fit male fashion dolls that have a waist measurement of 3 and 3/4 inch or 9.7 cm. Carefully measure your doll to make sure this pattern will fit him!

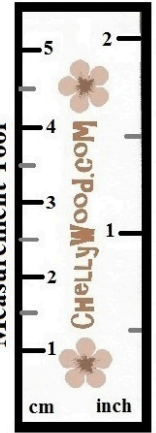
Difficulty Level:  Somewhat Advanced









SHIRT COLLAR

Cut 1 of White Cotton/Poly Blend





 ChellyWood1
 chelly.wood.7
 ChellyWood1

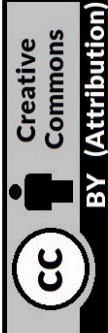
 chellywood1
 chellywood1


Difficulty Level:  Somewhat Advanced

SHIRT SLEEVE


Cut 2 of White Cotton/Poly Blend





SHIRT FRONT

Cut 2 of White Cotton/Poly Blend



Patterns use 1/4 inch seams. Please enlarge the pattern to fit an 11 x 8.5 inch sheet of American computer paper (216 x 279 mm) before printing. Visit ChellyWood.com to find the tutorial video to match this pattern.

Trousers and Dress Shirt Pattern

Fits Male Fashion Dolls

Difficulty Level:
About Average



TIE

Cut 2 of Black or Striped Cotton/Poly Blend



Creative Commons

BY (Attribution)

JEANS POCKET

Cut 2 of Lightweight Denim

TIE
TOP
Cut 2

SHIRT BACK

Cut 1 on Fold



Fold Line



ChellyWood.com
FREE Doll Clothes Patterns & Tutorials

Chellywood.com

Difficulty Level:
About Average



DRESSY TROUSERS/PANTS

Cut 2 of Black Cotton/Poly Blend Fabric



Creative Commons

BY (Attribution)

ChellyWood.com
FREE Doll Clothes Patterns & Tutorials



Measurement Tool

Patterns use 1/4 inch seams. Please enlarge the pattern to fit an 11 x 8.5 inch sheet of American computer paper (216 x 279 mm) before printing. Visit ChellyWood.com to find the tutorial video to match this pattern.



Free Patterns

