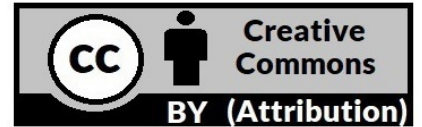


Terms of Use

This free, printable PDF sewing pattern was designed by Chelly Wood and is available to the public (along with its corresponding tutorial video or videos) at:



It has been marked with:



By downloading this free pattern, you agree to follow the Creative Commons Attribution copyright.

- 1 What does Creative Commons Attribution mean?



You may copy and redistribute the material in any medium or format. You may remix, transform, and build upon the material for any purpose, even commercially. However you must give appropriate credit, provide a link to the license, and indicate if changes were made. You may do so in any reasonable manner, but not in any way that suggests the licensor endorses you or your use. You may not apply legal terms or technological measures that legally restrict others from doing anything the license permits.

- 2 Why are there flowers on the pattern? What do they mean?



To learn more about the difficulty scale I use for my patterns (i.e. the little flowers), please go to ChellyWood.com, and in the menu, click on "Helpful Information." Then, in the drop-down menu, please click on "Tips and FAQ's." The system is explained there.



- 3 How do I find the tutorial that goes with my pattern?



On ChellyWood.com, right at the top of the home page, there's a button called "Website Navigation Guide." This guide will help you find the doll you want to sew for, along with this pattern and its tutorial video. It will also show you how to discover a list of all the dolls that will fit into this garment or accessory when completed.

- 4 I need help printing my pattern. What should I do?



Please visit your public library. Modern librarians are trained to help people with exactly this type of technology-related issue. (Chelly Wood is a retired librarian! She *KNOWS*!) You may be charged a small fee for the printed paper, but the librarian's assistance is free.

- 5 This pattern isn't exactly what I was looking for. Do you take requests?



Yes, I keep an ongoing list of requests. Leave your request in the comments on ChellyWood.com's blog. Be advised: it can take months or even years to design your request. An easier way is to create the pattern yourself through one of my online courses, which are found at:

<https://ctpub.com/pages/author-bio/chelly-wood>

NOTE: This pattern is designed to be printed on American 8.5 x 11 inch printer paper. For the A4 version, please go to ChellyWood.com

Free Evening Gown Dress Sewing Pattern for Fashion Dolls

For a complete list of all the
dolls that will fit this dress,
please go to

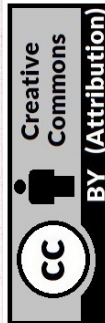
Chellywood.com



Dress
Front

Cut 1
of Cotton
or Jersey
Fabric

Difficulty Level:
Somewhat Advanced



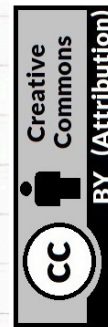
Chellywood.com

NOTE: This pattern is designed to be printed on 8.5 x 11 inch
(standard American) paper or 216 x 279 mm paper **without margins**.

Use a scant 1/4 inch
(4 mm) seam.

Dress
Right
Back

Cut 1
of Cotton
or Jersey
Fabric



Chellywood.com

Free Evening Gown Sewing Pattern for Fashion Dolls

I do keep an ongoing list of doll clothes pattern requests. Leave your request in the comments on any of the blog posts at ChellyWood.com. Be advised: it can take months or even years to design your request. An easier way is to create the pattern yourself through one of my online courses, which are found at:

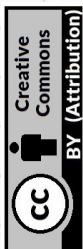
<https://ctpub.com/pages/author-bio/chelly-wood>



Dress
Left
Back

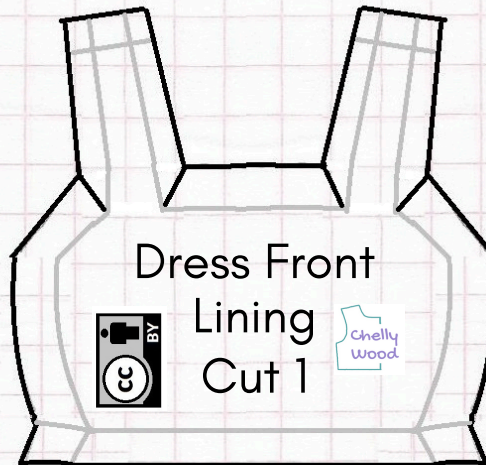
Cut 1
of Cotton
or Jersey
Fabric

Difficulty Level:
Somewhat Advanced



Chellywood.com

NOTE: This pattern is designed to be printed on 8.5 x 11 inch (standard American) paper or 216 x 279 mm paper **without margins**.

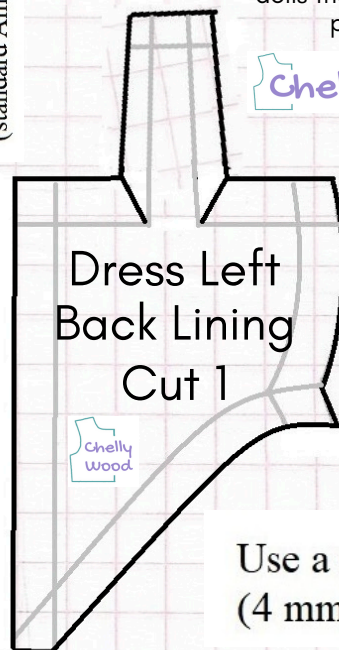


Dress Front
Lining
Cut 1

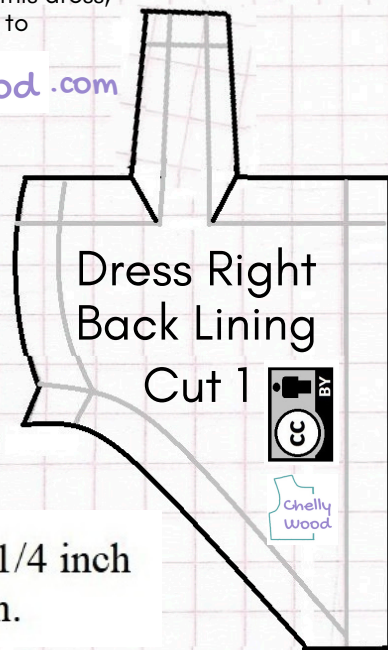
Please visit my YouTube channel, ChellyWood1 for the tutorial video that accompanies this pattern. Your video views help pay for my website and all its free patterns, so please watch! Comment! Like! and Share!

For a complete list of all the dolls that will fit this dress, please go to

Chellywood.com



Dress Left
Back Lining
Cut 1



Dress Right
Back Lining
Cut 1

Use a scant 1/4 inch (4 mm) seam.

Free Patterns at

Chellywood.com

