

Basic Skirt for 18" Dolls

Casing First Fold

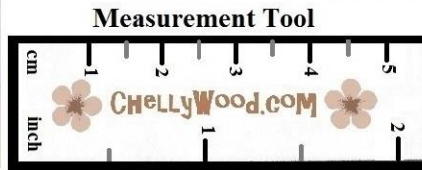
Casing Second Fold

NOTE: This pattern is designed to be printed on 8.5 x 11 inch (standard American) paper or 216 x 279 mm paper without margins.



Double-fold Hem

Short Skirt
Cut 1 on Fold
Use a true 1/4 inch (6 mm) seam.



Use a 6 mm. (slightly larger than 1/4 inch) double-fold hem.



Difficulty Level: 
Kind-of Easy...

Please visit my YouTube channel, ChellyWood1, for the tutorial video that accompanies this pattern.



FOLD

Sleeveless Shirt Pattern for 18" Dolls



View A: Shirt with Lining

Difficulty Level: About Average



SHIRT BACK

ChellyWood.com

FREE Doll Clothes Patterns & Tutorials



Use a true 1/4 inch (6 mm) seam.

Please visit my YouTube channel, ChellyWood1, for the tutorial video that accompanies this pattern.

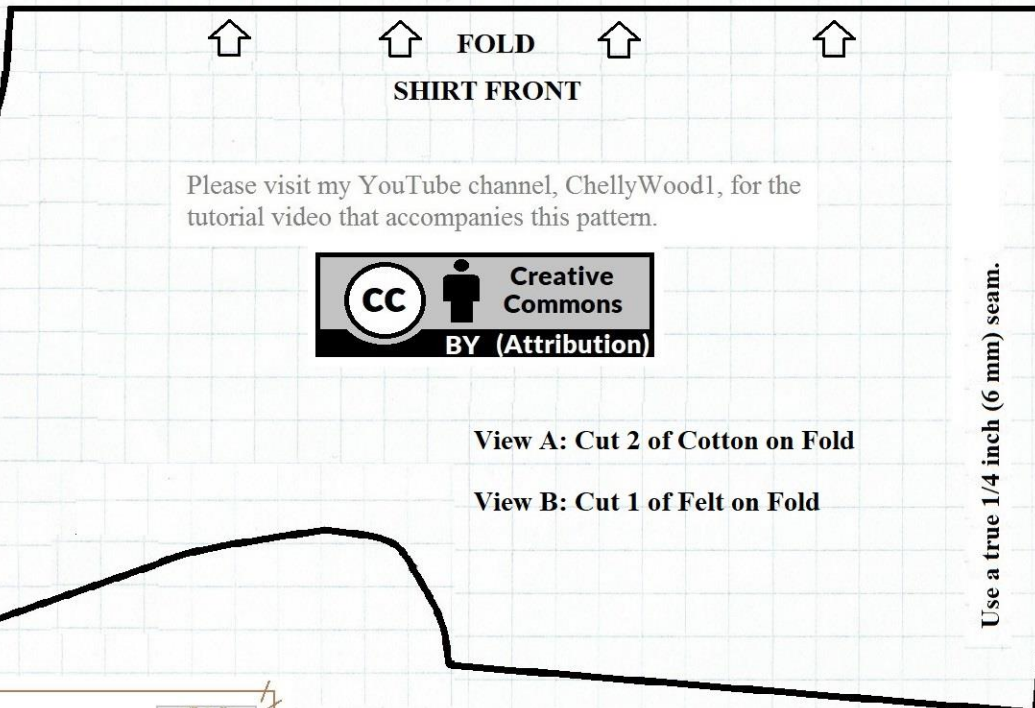


View A: Cut 4 of Cotton

View B: Cut 2 of Felt



View B: Easy-sew Felt Shirt



SHIRT FRONT



FOLD

Please visit my YouTube channel, ChellyWood1, for the tutorial video that accompanies this pattern.



View A: Cut 2 of Cotton on Fold

View B: Cut 1 of Felt on Fold

Use a true 1/4 inch (6 mm) seam.

Difficulty Level: Super EASY!



ChellyWood.com

FREE Doll Clothes Patterns & Tutorials



NOTE: This pattern is designed to be printed on 8.5 x 11 inch (standard American) paper or 216 x 279 mm paper **without margins**.

