

18-Inch Doll Shorts Pattern

Cut 2

Difficulty Level: 
Kind-of Easy...

ChellyWood.com

FREE Doll Clothes Patterns & Tutorials

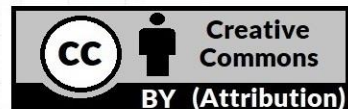


Use 1/4 Inch Seam

NOTE: This pattern is designed to be printed on 8.5 x 11 inch (standard American) paper or 216 x 279 mm paper **without margins**.

Please visit my YouTube channel, ChellyWood1, for the tutorial video that accompanies this pattern.

Measurement Tool



Sleeveless Shirt Pattern for 18" Dolls



View A: Shirt with Lining

Difficulty Level: About Average



SHIRT BACK

ChellyWood.com

FREE Doll Clothes Patterns & Tutorials



Use a true 1/4 inch (6 mm) seam.

Please visit my YouTube channel, ChellyWood1, for the tutorial video that accompanies this pattern.

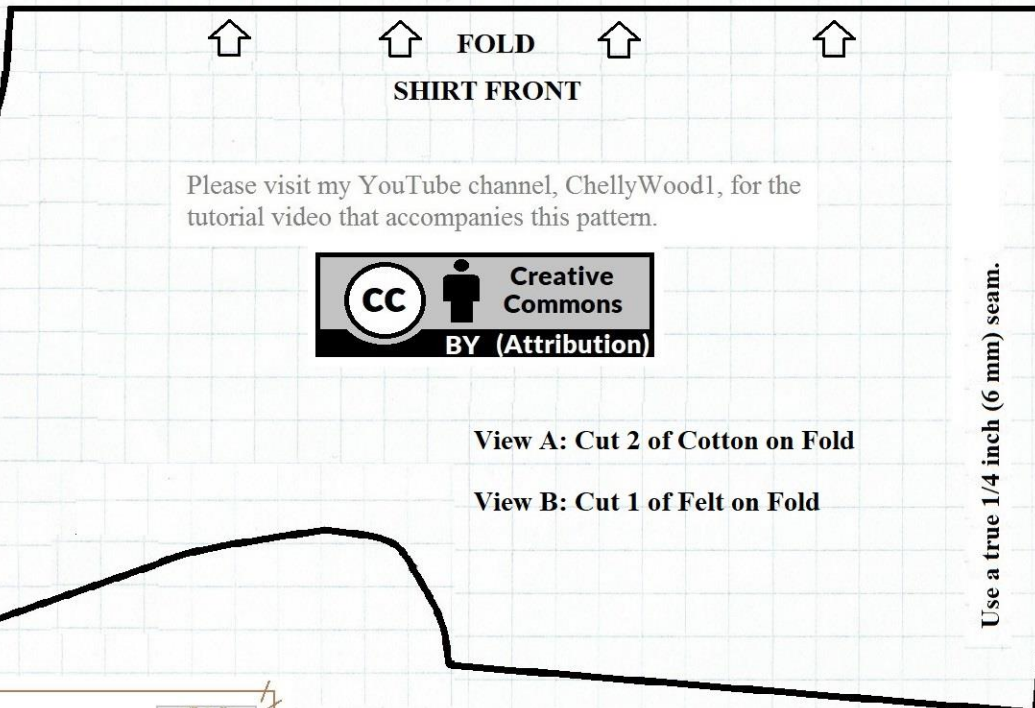


View A: Cut 4 of Cotton

View B: Cut 2 of Felt



View B: Easy-sew Felt Shirt



SHIRT FRONT

Please visit my YouTube channel, ChellyWood1, for the tutorial video that accompanies this pattern.



View A: Cut 2 of Cotton on Fold

View B: Cut 1 of Felt on Fold

Use a true 1/4 inch (6 mm) seam.

Difficulty Level: Super EASY!



NOTE: This pattern is designed to be printed on 8.5 x 11 inch (standard American) paper or 216 x 279 mm paper **without margins**.

