

# Miniature Dress Pattern for Dolls Sizes 4" to 6"

## Metric Doll Sizes: 10 cm to 15.5 cm

**ChellyWood.com**

FREE Doll Clothes Patterns & Tutorials



Please visit my YouTube channel, ChellyWood1 for all the free tutorial videos that accompany this pattern.

Because of their miniature size, these doll clothes patterns use a 3 mm or 1/8 inch seam allowance. The skirt can be hemmed with a 4 mm or scant 1/4 inch seam. Note that the folklore dress which uses patterns A, D, E and F does not have a hem on the skirt, but a lace ruffle was added to give more length to it.



Use A and B

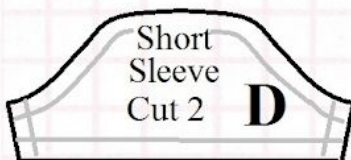
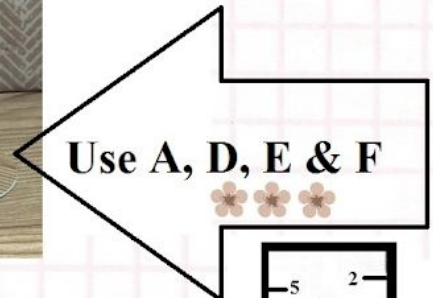
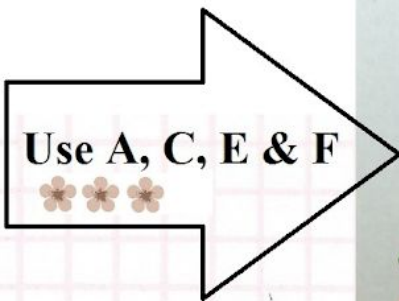
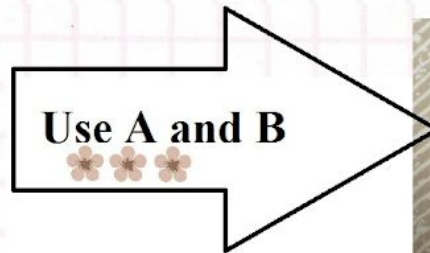
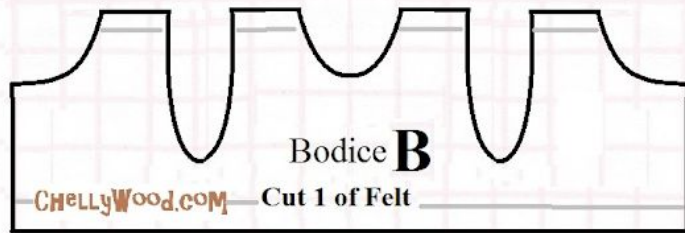
Skirt **A**  
Cut 1



Use A, D, E and F

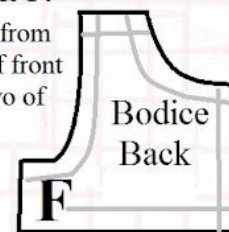
**ChellyWood.com**

FREE Doll Clothes Patterns & Tutorials

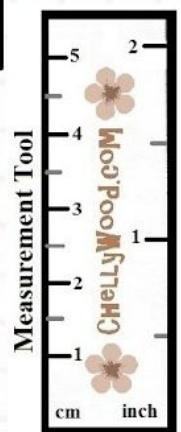


**For Pieces E & F:**

When cutting from felt, cut one of front on fold and two of back, but... when cutting from cotton:



Cut 2 of Front on Fold and Cut 4 of Back NO Fold.



**NOTE:** This pattern is designed to be printed on 8.5 x 11 inch (standard American) paper or 216 x 279 mm paper **without margins**.