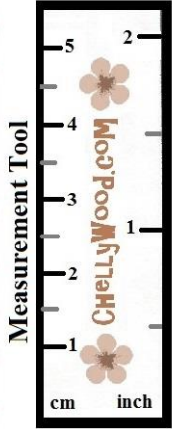


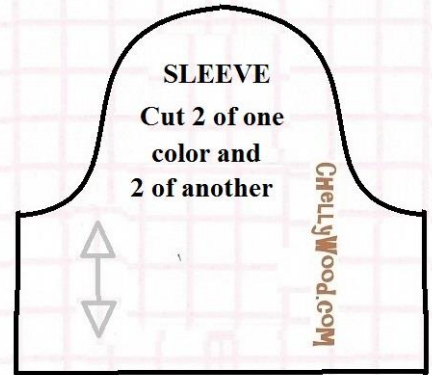
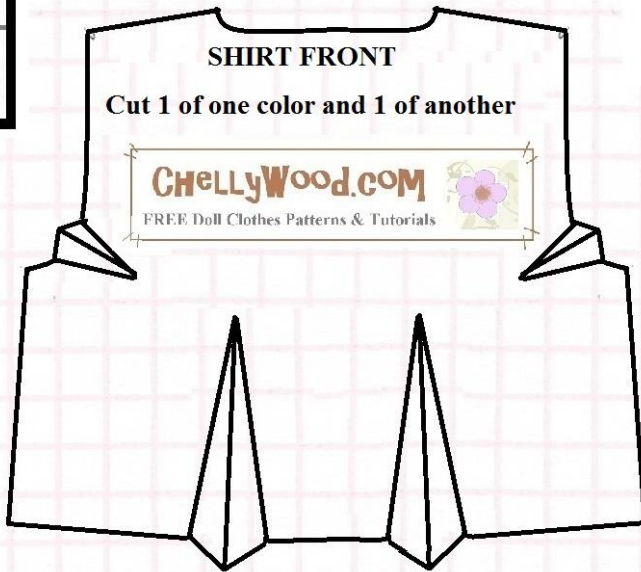
# Reversible Shirt for Fashion Dolls of Different Sizes



Please visit my YouTube channel, ChellyWood1, for the tutorial video that accompanies this pattern.

**NOTE:** This pattern is designed to be printed on 8.5 x 11 inch (standard American) paper or 216 x 279 mm paper **without margins**.

Use a scant 1/4 inch (4 mm) seam.



**Fits regular-sized,**

**Curvy,**

**& Petite...**



Difficulty Level:  
Very Advanced





# "Babydoll" Pajamas for Fashion Dolls FREE Pattern

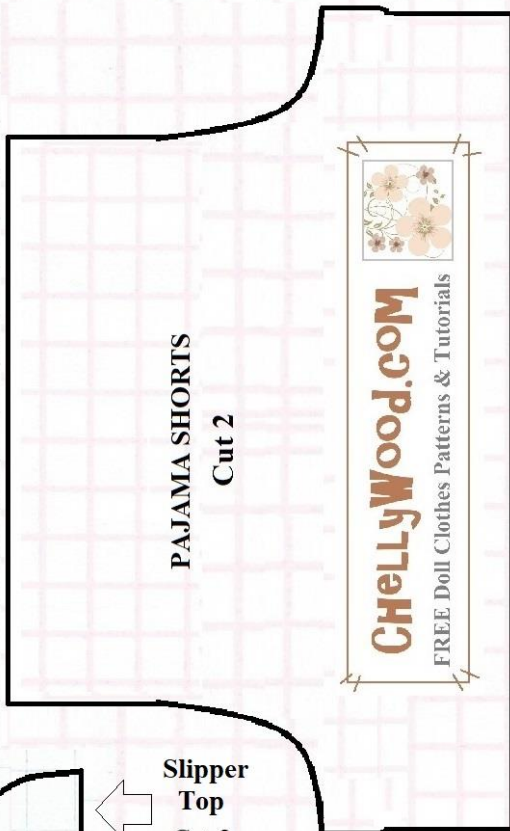
PAJAMA TOP STRAPS  
Cut 2 from Ribbon



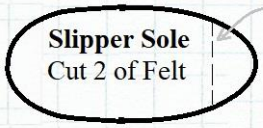
## BIAS TAPE MEASUREMENT

Cut 1 from Bias Tape

(Alter the length of the bias tape for different sized dolls, based on their chest measurements.)



Slipper Top  
Cut 2 of Felt



Slipper Sole  
Cut 2 of Felt

Cut line for dolls with small feet

↑ ↑ FOLD ↑

**PAJAMA TOP**  
Cut 1 on Fold

Difficulty Level: Kind-of Easy...

**NOTE:** This pattern is designed to be printed on 8.5 x 11 inch (standard American) paper or 216 x 279 mm paper **without margins**.

For dolls between 5 and 12 inches tall, use a scant 1/4 inch (4 mm) seam.

FREE Doll Clothes Patterns & Tutorials

