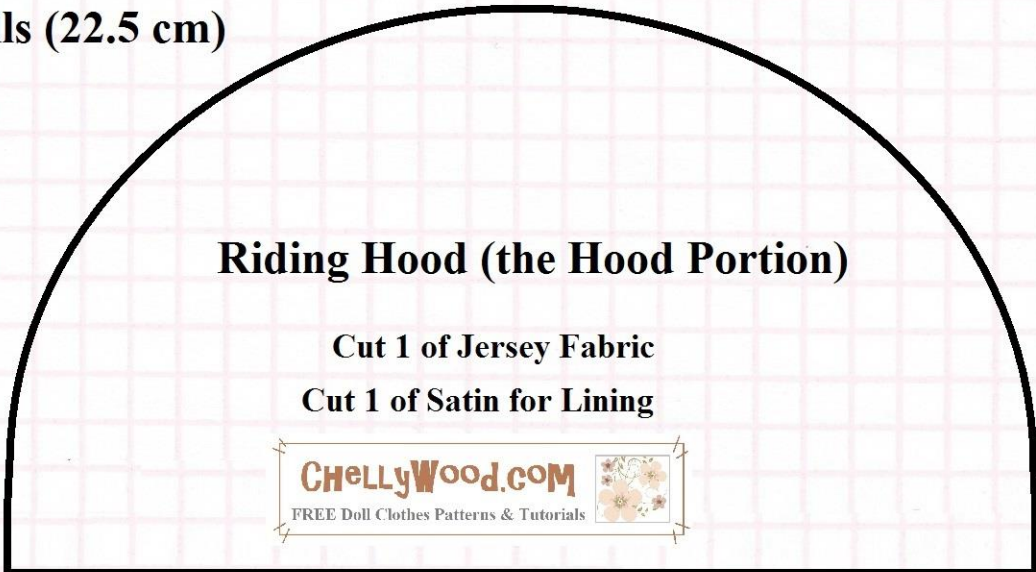


Pattern for Riding Hood and Victorian Bloomers

Fits 8" Dolls (22.5 cm)



Riding Hood (the Hood Portion)

Cut 1 of Jersey Fabric

Cut 1 of Satin for Lining



Riding Hood (the Skirting Portion -- to Cover shoulders)

Cut 1 of Jersey Fabric

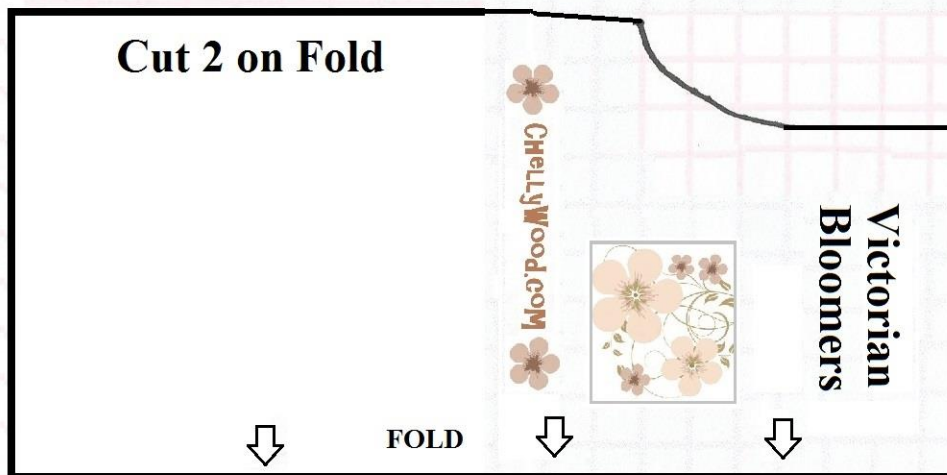
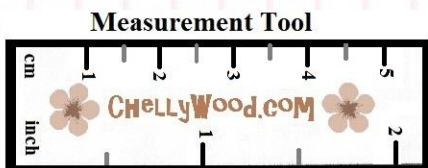
ChellyWood.com

FREE Doll Clothes Patterns & Tutorials



Please visit my YouTube channel, ChellyWood1, for the tutorial video that accompanies this pattern.

NOTE: This pattern is designed to be printed on 8.5 x 11 inch (standard American) paper or 216 x 279 mm paper **without margins**.



Cut 2 on Fold

ChellyWood.com



Victorian Bloomers



FOLD

