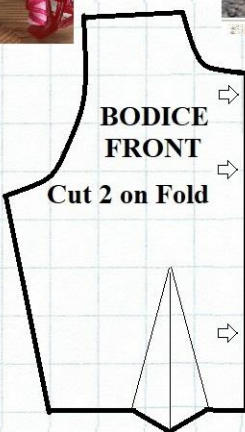
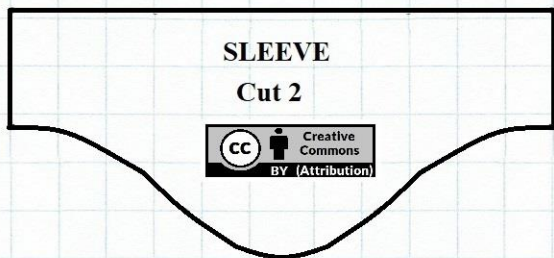
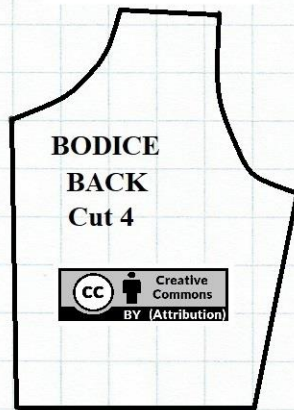


Small Doll A-Line Dress Pattern

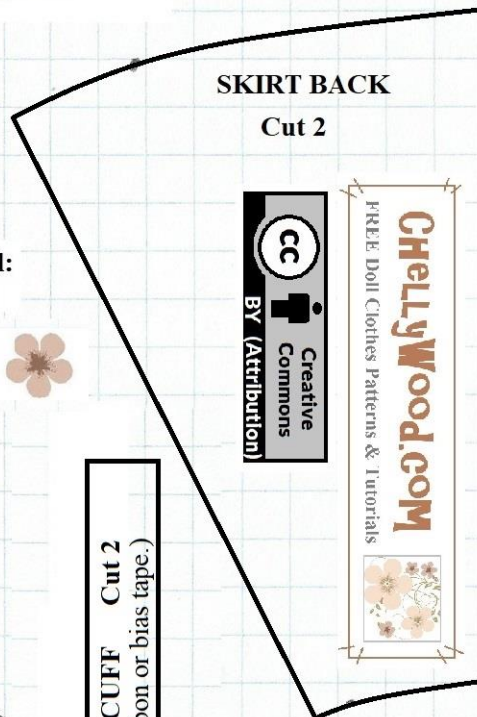
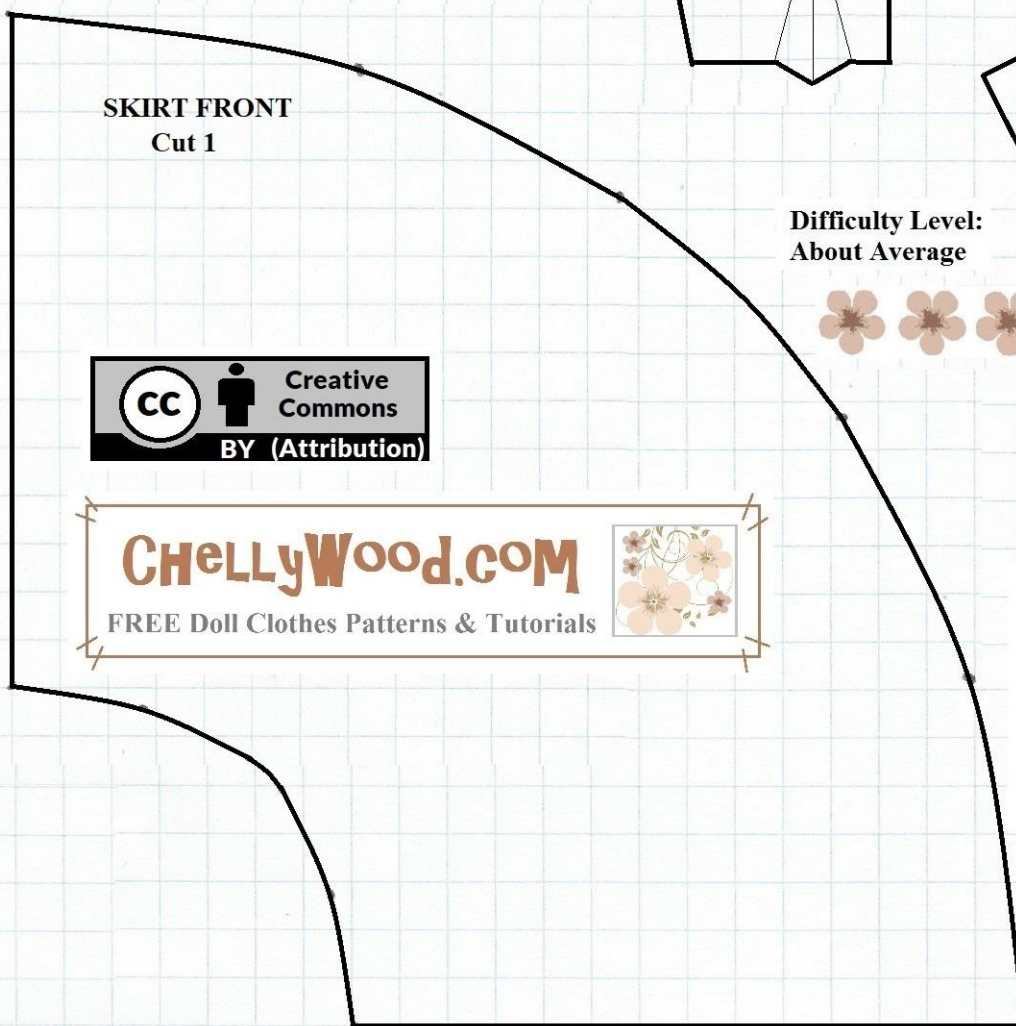


NOTE: This pattern is designed to be printed on 8.5 x 11 inch (standard American) paper or 216 x 279 mm paper **without margins.**



Please visit my YouTube channel, ChellyWood1, for the tutorial video that accompanies this pattern.

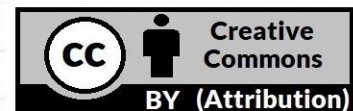
Use a scant 1/4 inch (4 mm) seam.



Difficulty Level:
About Average



SLEEVE CUFF Cut 2
(Use ribbon or bias tape.)



Measurement Tool

