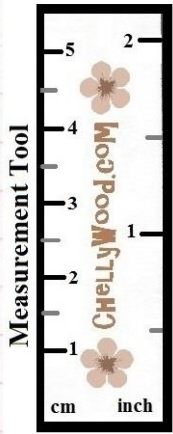


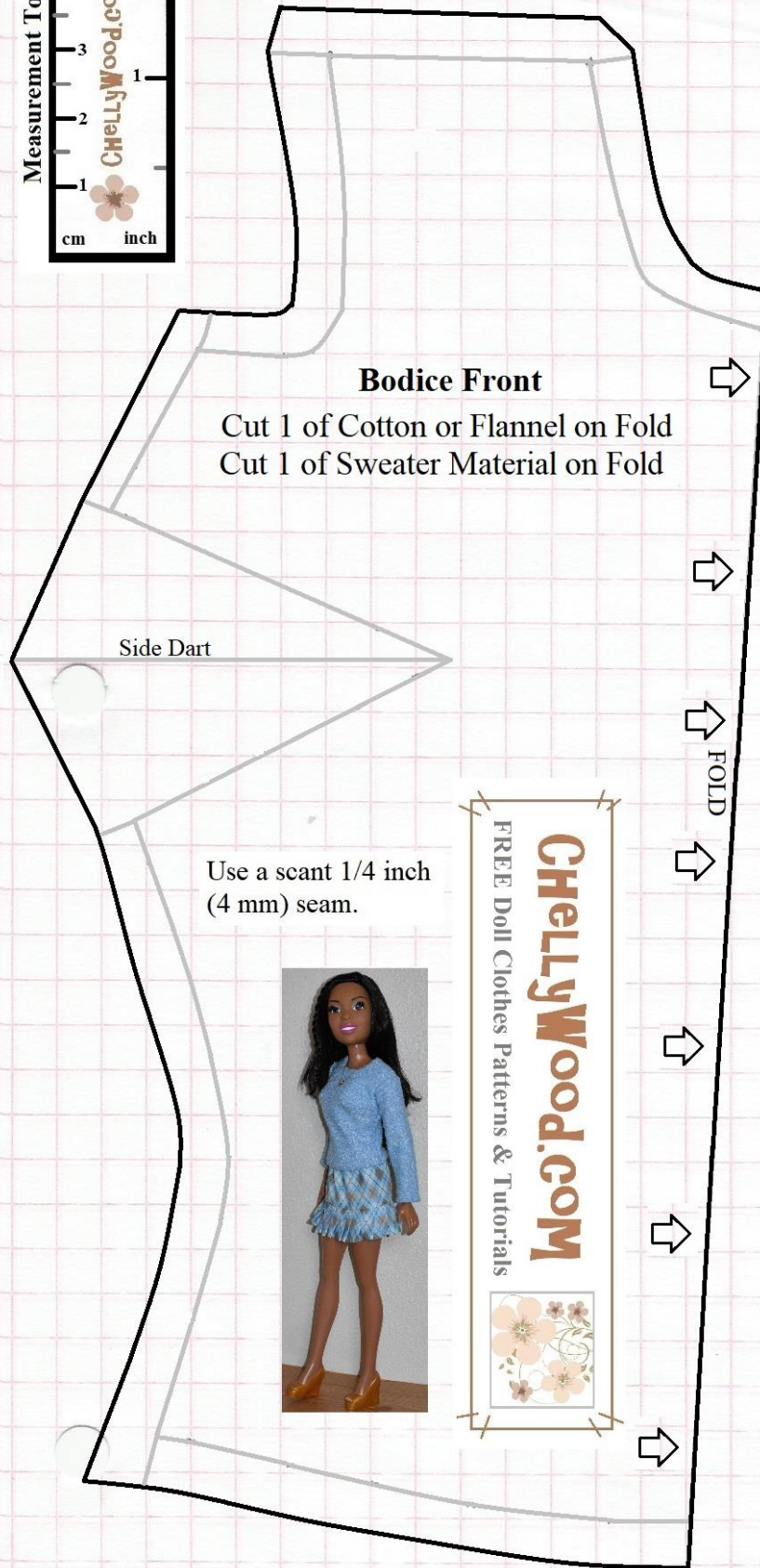
28-inch Fashion Doll Sweater's Bodice

Please visit my YouTube channel, ChellyWood1, for the tutorial video that accompanies this pattern.

NOTE: This pattern is designed to be printed on 8.5 x 11 inch (standard American) paper or 216 x 279 mm paper **without margins**.



Difficulty Level:
About Average



Bodice Front

Cut 1 of Cotton or Flannel on Fold
Cut 1 of Sweater Material on Fold

Side Dart

Use a scant 1/4 inch (4 mm) seam.



Bodice Back

Cut 2 of Cotton or Flannel
Cut 2 of Sweater Material (No Fold)

Use a scant 1/4 inch (4 mm) seam.



Use a scant 1/4 inch (4 mm) seam.

ChellyWood.com



Fitted Sleeve for 28-inch Fashion Doll Sweater

Please visit my YouTube channel, ChellyWood1, for the tutorial video that accompanies this pattern.

Difficulty Level:
About Average



NOTE: This pattern is designed to be printed on 8.5 x 11 inch (standard American) paper or 216 x 279 mm paper **without margins**.



Fitted Sleeve for Sweater
Cut 2 of Cotton or Flannel
Cut 2 of Sweater Material



Use a scant 1/4 inch
(4 mm) seam.

FREE Doll Clothes Patterns & Tutorials
ChellyWood.COM

